



*Your Custom-Made*

*HNT Itinerary Awaits...*

At HNT, we specialize in creating and guiding private custom-made tours around Hokkaido in every season. Our passion for travel, attention to detail and love of Hokkaido will guide you to one of the best holidays of your life!

Find out why guests consistently rave about our tours and honor us with 5-star ratings. We not only care about your holiday, we're right there with you, offering complete logistical support, dedicated English-speaking nature guides and private transportation on every tour.



*Enjoy Nature. Be Happy!*



## Tour Synopsis

This 7-day, active hiking tour is a fantastic combination of intermediate level hikes, top sightseeing destinations and nature activities. You'll feel completely immersed in Hokkaido's plentiful nature, including canoeing at



Kushiro marshland, hiking up active volcano, exploring hidden gorges, dipping in wild & hotel hot springs, and of course, enjoying fantastic gourmet cuisine at hotels, local restaurants and seafood markets. Two overnights worth mentioning are at a traditional ryokan with owl and sable wildlife viewing, as well as a hut stay to see the sunrise atop a mountain peak! All of the hikes and activities can be tailored to your needs and preferences, so you needn't feel worried about overextending yourselves. We're sure you're going to have an unforgettable tour, and will want to return again in a different season.

## Highlights of the Tour

- ✓ Tour guided by an English-speaking nature guide with private transportation
- ✓ Guided intermediate-level hikes throughout your tour, with free use of our hiking & overnight equipment available upon request
- ✓ Delicious Hokkaido gourmet, with fantastic hotel meals, visits to seafood markets and our recommended Michelin-star & local restaurants
- ✓ Hike through incredible landscapes, active volcanos, wild hot springs, highland marshlands, waterfall trails and more
- ✓ A nice variety of famous sightseeing spots and off-the-beaten-path locations
- ✓ Stay at some of the best hotels in Hokkaido, including Yuyado Dai-ichi Ryokan, a wildlife viewing traditional ryokan in Eastern Hokkaido



**Hokkaido Nature Tours**  
1-7 5-13 Ishiyama, Minami-ku  
Sapporo, Hokkaido, Japan  
(+81)70-3540-6622

## Tour Route

Day 1: Chitose → Mt. Tarumae →  
Hoheikyo Onsen → Sapporo

Day 2: Sapporo → Uryu → Asahidake  
Onsen Resort

Day 3: Asahidake → Mt. Kurodake  
Hut

Day 4: Mt. Kurodake Hut →  
Asahidake → Sounkyo Onsen Resort

Day 5: Sounkyo Gorge → Lake Mashu → Lake Kussharo → Yoroushi Onsen

Day 6: Yoroushi Onsen → Mt. Meakandake → Lake Akan

Day 7: Lake Akan → Kushiro Marshland → Kushiro → Kushiro Airport



## Why Travel with Us?

- ✓ Unforgettable private tours in Hokkaido with an English-speaking guide & private transportation
- ✓ Carefully selected, never outsourced, enthusiastic and highly-experienced nature guides with insider knowledge of Hokkaido
- ✓ Uniquely crafted, custom-made itineraries built around your personal preferences
- ✓ Complete logistical support and itinerary creation from our HNT travel experts, which means no middle-man costs and the most competitive prices
- ✓ Superior flexibility during your tour with the ability to change activities as you go, as well as price protection for missed activities beyond your control



## Guest Information

Name & No. of Guests	Activity Preferences	Pace of Tour
Sample 2 pax	Summer Gourmet, Hot Springs, Hiking & Trekking, Adventure Activities, Daisetsuzan National Park, Crafts Culture & Cooking	Very Active
Tour Dates	Personal Preferences	Budget
7 Day Tour, June - September	n/a	Flexible-budget
Country of Residence	Tour Starting & Ending Points	Splurge
Sample	This itinerary assumes a morning arrival at New Chitose Airport and mid-day departure from Kushiro Airport	Nature Activities, Accommodation, Gourmet, Health & Relaxation

## Your Custom-Made Tour Itinerary

### Day 1: Chitose, Mt. Tarumae, Jozankei & Sapporo

**Pick-up at New Chitose Airport** Your guide will be waiting at the arrival gates holding an HNT sign; **please confirm your flight details**

#### Mt. Tarumae & Mt. Fuppushidake Hike

The trail starts at the 7<sup>th</sup> station parking lot, from where the 1 hour hike to the crater rim begins. The hiking trail is well-defined and has steps leading to the top. Once on the crater rim, we can circumnavigate the crater (2.5 hrs.), and can add the side peak of Mt. Fuppushi (2.5 hrs.) and/or head into the heart of the volcano to the steaming fumaroles and sulfur vents within (1 hr. hike)

**Bento Lunch** We'll have a bento lunch at the summit which can be purchased earlier in the day (self-pay)

**Hoheikyo Onsen** One of the best onsens in Hokkaido, Hoheikyo boasts large outdoor baths, Japanese gardens and bathtub temperature waters



#### Hokkaido Nature Tours

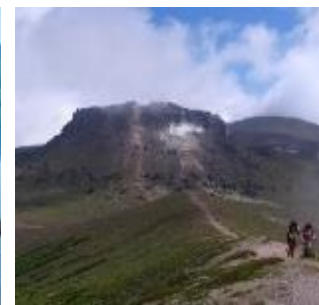
1-7 5-13 Ishiyama, Minami-ku  
 Sapporo, Hokkaido, Japan  
 (+81)70-3540-6622

**Drive to Sapporo** Driving time appx. 1 hr.  
**Hotel-Check in** Guaranteed downtown location  
**Dinner in Sapporo** Choose from a variety of great restaurants

#### Hike #1: Mt. Tarumae & Mt. Fuppushi

Hiking Time	4-7 hrs.
Max Elevation	1,041 m.
Total Ascent & Descent	800-1,500 m.
Difficulty	Intermediate
Notable Features	Lava Dome, fumaroles, volcanic tuff, panoramic views & easy access

**Overnight Location: Sapporo** (breakfast included)



### Day 2: Uryu Marsh & Asahidake Onsen

**Drive to Uryu** Driving time appx. 3 hrs.

#### Uryu Marsh & Mt. Minami Shokandake Hike

Uryu Marsh is Hokkaido's largest highland marsh and a precious ecosystem boasting a number of unique plant and flower varieties. The linked boardwalk trails make for fantastic and easy hiking, and along with waterfalls and the adjoining peak, is a hike with much variety.

**Bento Lunch** We'll have a bento lunch at the summit which can be purchased earlier in the day (self-pay)

**Drive to Asahidake Onsen Resort** Driving time appx. 3.5 hrs.

**Shikisai no Oka** In these vast, spectacular flower gardens you can ride a tractor, buggy, or pet the alpaca at the mini alpaca farm.

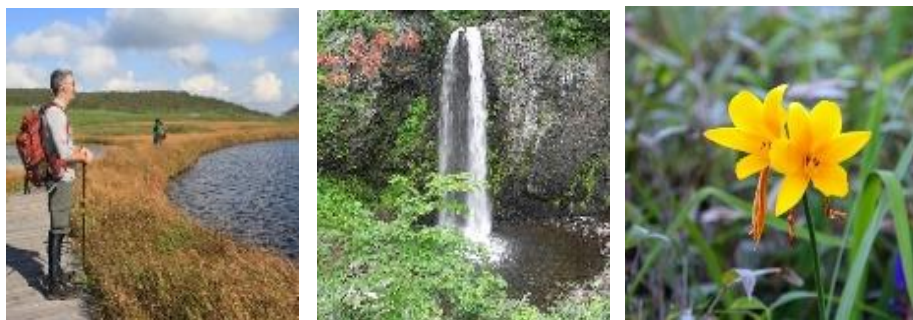
**Asahidake Freshwater Spring** Fill up your water bottles at this spring known for its pure tasting water

**Hotel-Check in, Onsen & Dinner** This mountain resort is nestled at the base of Hokkaido's highest mountain, Mt. Asahidake

**Hike #2: Uryu Marsh & Mt. Minami Shokandake**

Hiking Time	5-6 hrs.
Max Elevation	1296 m.
Total Ascent & Descent	1300 m.
Difficulty	Intermediate
Notable Features	Unique flora, waterfalls, lodge facilities, endemic species & panoramic views

**Overnight Location: Asahidake Onsen Resort** (dinner & breakfast included)



**Day 3: Mt. Asahidake & Mt. Kurodake**

**Asahidake Ropeway & Sugatami Highland Plateau** Ride the ropeway to the stunning Sugatami Highland Plateau at the foot of Mt. Asahidake, Hokkaido's highest peak, for beginner-level hiking to steaming fumaroles an stunning views

**Mt. Asahidake to Mt. Kurodake Hike**

This classic traverse over the northern part of Daisetsuzan National Park begins at the Sugatami Highland Plateau, as the trail ascends consistently up the southern ridge of Mt. Asahidake, the highest mountain in Hokkaido. After about 2.5 hours, we'll be at the peak and take a break for lunch, hopefully with sweeping views in every direction. After lunch, the trail descends into a large crater, and after following the crater rim for an hour, we'll start to emerge under

the Mt. Kurodake Hut, our overnight location (overnight gear required; please see the What to Bring section which follows the itinerary).

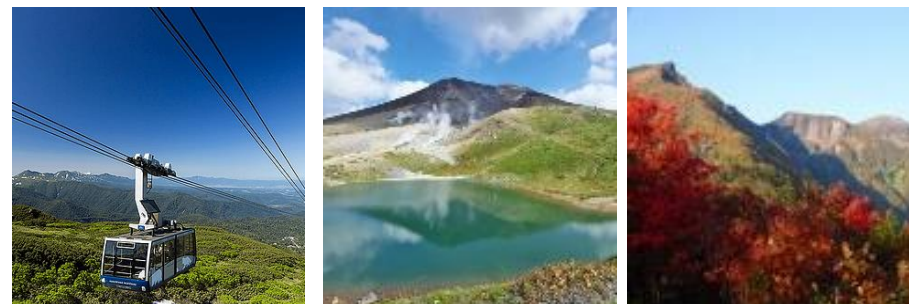
**Bento Lunch** We'll have a bento lunch at the summit which can be purchased earlier in the day (self-pay)

**Dinner at Kurodake Hut** We'll cook a simple, mountain hut dinner using gas camping stoves and supplies carried up from the bottom.

**Hike #3: Mt. Asahidake to Mt. Kurodake Hike**

Hiking Time	6-7 hrs.
Max Elevation	2291 m.
Total Ascent & Descent	1400 m.
Difficulty	Intermediate
Notable Features	Hokkaido's highest peak, highland plateau, sunrise at Mt. Kurodake, mountain hut overnight, berry picking in late summer

**Overnight Location: Kurodake Hut** (simple dinner & breakfast included)



**Day 4: Mt. Kurodake, Asahidake & Sounkyo Gorge**

**Mt. Kurodake at Sunrise** Hike for 30 minutes from the hut to Mt. Kurodake to see the sun rise over Hokkaido in the Land of the Rising Sun

**Breakfast at the Hut** Have a simple breakfast at the hut before starting the hike back to Mt. Kurodake

**Mt. Kurodake to Asahidake Ropeway via Nakadake Wild Onsen Route** After breakfast at the hut, we'll complete the circumnavigation of the main crater in a couple of hours, eventually reaching a saddle below Mt. Nakadake, from where we'll descend through a narrow cleft to a wild onsen, where a





footbath is waiting. From there it's a further 1.5 hours back to the top ropeway station, passing numerous small ponds en route.

**Bento Lunch** We'll have a bento lunch en route which can be purchased the day before (self-pay)

**Drive to Souunkyo Onsen Resort** Driving time appx. 1.5 hrs.

**Hotel Check in, Onsen & Dinner** Located at the base of Mt. Kurodake, this resort is tucked into Souunkyo Gorge, Hokkaido's largest and most spectacular gorge

**Hike #4: Mt. Kurodake to Asahidake Ropeway via Nakadake Wild Onsen Route**

Hiking Time	6-7 hrs.
Max Elevation	2113 m.
Total Ascent & Descent	1000 m.
Difficulty	Intermediate
Notable Features	Minor peaks, wild onsen, berry picking in summer, Asahidake ropeway & numerous ponds

**Overnight Location: Souunkyo Onsen Resort** (dinner & breakfast included)



**Day 5: Souunkyo Gorge, Lake Mashu, Lake Kussharo & Yoroushi Onsen**

**Souunkyo Gorge 8 Waterfalls Trail** Walk as much or as little of this spectacular beginner-level waterfall gorge trail as you like, with a chance at spotting deer, white-tailed eagles, harlequin ducks and other wildlife

**Drive to Teshikaga** Driving time appx. 3 hrs.



**Hokkaido Nature Tours**

1-7 5-13 Ishiyama, Minami-ku  
Sapporo, Hokkaido, Japan  
(+81)70-3540-6622

**Lunch in Teshikaga**

Recommended: Japanese curry, the local specialty

**Lake Mashu Sightseeing**

Gaze at the waters of the clearest lake in Japan, once rated as the clearest lake in the world!

**Mt. Iou Geothermal Park**

Experience the active volcanic area of Mt. Iou, where sulfur vents billow from the ground

**Lake Kussharo Sunayu**

Take a foot bath at this unique onsen beach, where the water rises up as you dig a hole in the sand

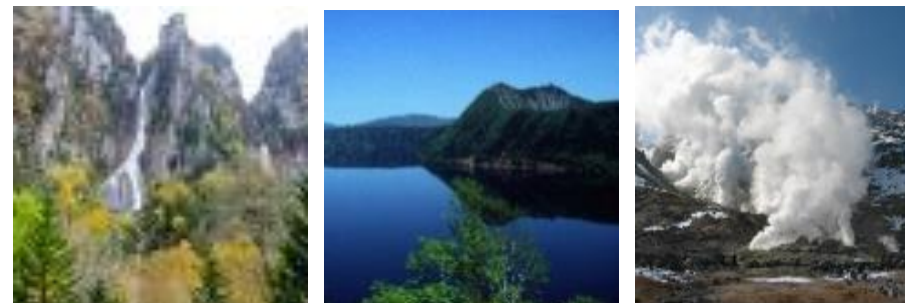
**Lake Kussharo Kotan Wild Onsen**

Located on the shores of Lake Kussharo; separated bathing areas for men & women with basic changing facilities; bring your own towels

**Hotel Check-in, Onsen & Dinner**

A unique experience in staying at one of Hokkaido's best traditional Japanese ryokans with a chance to spot the rare Blakiston's Fish Owl & Japanese sable

**Overnight Location: Yoroushi Onsen Yuyado Dai-ichi Ryokan** (dinner & breakfast included)



**Day 6: Mt. Meakandake & Lake Akan**

**Akan-Odan Road Scenic Drive**

Driving time appx. 1.5 hrs.

**Lake Onneto Sightseeing**

Admire the blue-green color of this lake which is situated right under the active volcano of Mt. Meakandake

**Mt. Meakandake Lake Onneto Course Hike**

Starting from the blue-green mountain-reflecting Lake Onneto, the active volcano of Mt. Meakandake offers a steep ascent, small caldera lake at the peak, powerful fumaroles and a side-hike up Mt. Meakan-Fuji, a blackened conical volcano.

- Bento Lunch** We'll have a bento lunch at the summit which can be purchased earlier in the day (self-pay)
- Lake Akan Ainu Kotan Village** Explore the Ainu village at Lake Akan, great souvenir shopping directly from the artists
- Hotel Check-in, Onsen & Dinner** One of the Hokkaido's premier lake resorts; we'll try to reserve lake view rooms
- Ainu Theater Performance** Learn about Ainu culture and their spiritual world through live ceremonial performances.

**Hike #5: Mt. Meakandake Lake Onneto Course Hike**

Hiking Time	5-7 hrs.
Max Elevation	1,499 m.
Total Ascent & Descent	1,400 m.
Difficulty	Intermediate
Notable Features	Colored lakes, active volcano, fumaroles, side-hike to Mt. Meakan-Fuji, panoramic views

**Overnight Location: Lake Akan** (dinner & breakfast included)

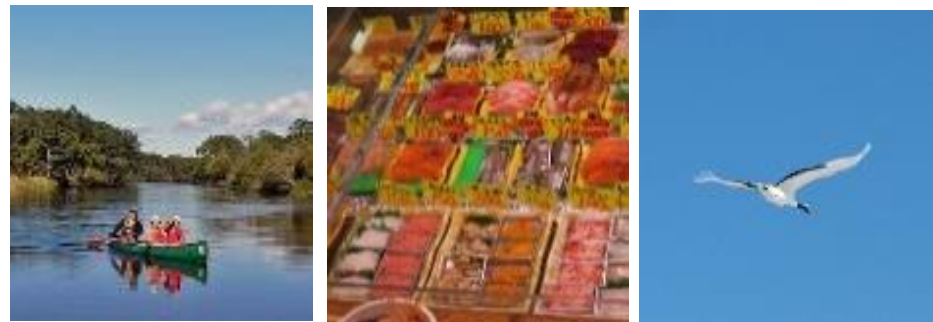


## Day 7: Kushiro Marshland & Kushiro

- Kushiro Marshland Canoeing** Enjoy a 90 minute downstream canoeing ride in Japan's largest marsh, observing a variety of wildlife & birds with a professional river guide
- Lunch at Kushiro Washo Market** Sample some of the freshest seafood in Hokkaido, with a huge variety of sashimi that you can choose per slice directly from the vendors, or choose from a variety of other seafood dishes
- Akan International Crane Center** Learn about the incredible history of the tancho cranes, one of the symbols of Japan, and their near extinction;

outside of winter there are only a few resident cranes at the center (if time permits)  
 Driving time appx. 20 min. Unfortunately, this marks the end of our tour together . . . until next time!

**Drop-off at Kushiro Airport**



## Tour Price

<b>Tour Price</b>	¥306,400 pp
<b>Sales Tax</b>	¥24,512 pp
<b>Total Tour Price</b>	¥330,900 pp
<b>5% Off Early-booking Tour Price*</b>	<b>¥314,400 pp</b>

\* Early-booking discount valid for tours booked at least 3 months prior to the tour date

What is included in this tour	What is not included in this tour
<ul style="list-style-type: none"> <li>✓ Tour guided by an English-speaking nature guide</li> <li>✓ Private transportation in a 4wd vehicle</li> <li>✓ Entry and participation fees for all activities listed in the itinerary</li> <li>✓ Guided hiking, canoeing, hot springs, summer gourmet, mountain hut overnight, mountain ropeway, Ainu culture &amp; more</li> <li>✓ Free or rental use of HNT mountain equipment upon availability</li> </ul>	<ul style="list-style-type: none"> <li>• Daily lunches</li> <li>• 1 Dinner</li> <li>• Wi-Fi (please ask us about mobile Wi-Fi or SIM card rental from New Chitose Airport)</li> </ul>



**Hokkaido Nature Tours**  
 1-7 5-13 Ishiyama, Minami-ku  
 Sapporo, Hokkaido, Japan  
 (+81)70-3540-6622

<ul style="list-style-type: none"> <li>✓ 3/4 star hotel/<i>ryokan</i> accommodation</li> <li>✓ 1 night at a mountain hut with mountain dinner &amp; breakfast</li> <li>✓ 4 hotel/<i>ryokan</i> dinners including at least 1 <i>kaiseki</i> dinner</li> <li>✓ 5 hotel/<i>ryokan</i> breakfasts</li> <li>✓ Hot springs entry fees and taxes</li> <li>✓ Quality photos provided following the tour</li> </ul>	
--	--

Sample Hotels for HNT Custom-Made Tours		
	JR Tower Hotel Nikko Sapporo	Sapporo
★	The Windsor Hotel Toya Resort & Spa	Lake Toya
5	Hilton Niseko Village	Niseko
★	Lake Shikotsu Tsuruga Resort Spa Mizu no Uta	Lake Shikotsu
★	Akan Yuku no Sato Tsuruga	Lake Akan
	Lake Toya Nanokaze Resort	Lake Toya
	Sapporo Grand Hotel	Sapporo
	New Furano Prince Hotel	Furano
★	Sapporo Prince Hotel	Sapporo
4	Dai-ichi Takimotokan	Noboribetsu Onsen Resort
★	Yunokawa Prince Hotel Nagisatei	Hakodate
	Art Hotels Sapporo	Sapporo
	Hotel Taisetsu	Soukyo Onsen Resort
	Asahidake Yumoto Yukomanso	Asahidake Onsen Resort
	Asahikawa Park Hotel	Asahikawa
	Hotel Niseko Alpen	Niseko
★	Ibis Styles Sapporo	Sapporo
3	Toyoko Manseikaku Hotel Lakeside Terrace	Lake Toya
★	Kushiro Royal Inn	Kushiro
	Kohan Tei	Lake Toya
	Air Terminal Hotel	New Chitose Airport
	Toya Kanko Hotel	Lake Toya

## Policy & Payment Information

### What to Bring

Day hiking backpack with rain cover · Windproof & waterproof jacket & pants · Winter hat · Thin gloves · Trekking boots · Trekking poles (if accustomed) · Non-cotton synthetic hiking shirts · Thick synthetic or wool socks · Thermal leggings · Water bottle · Headlamp · Sunglasses · Small towel

Please request our HNT Hiking Essentials Checklist after booking your tour. If you have any questions, ask us!

### HNT Guiding Policy

Paramount for HNT Tours is the safety and wellbeing of our guests. Our extensive experience in the mountains of Hokkaido and internationally gives us a profound respect for nature, and we may be forced to alter a tour itinerary if we encounter adverse conditions that may put our guests at risk. All tour activities in the itinerary are subject to modification depending on safety conditions. Your safety is our top priority.

### Payment Methods

Please specify your preferred payment method for the 50% deposit:

1. **International Bank Transfer** (subject to bank fees of 1,500 yen per transaction in addition to remitter fees)
2. **PayPal** (subject to PayPal fees of between 2-6% per transaction)

### Deposit & Cancellation Policy

A minimum 50% deposit must be received no later than 30 days before the start of a tour. The remainder can be paid in cash upon arrival. Cancellations by any participants made by 30 days before the start of a tour are eligible for a 50% deposit



HNT Private Custom-Made Tour Itinerary

Sample / 2 pax

Recommended Dates: 7 Day Tour, June - September

refund. Cancellations by any participants made within 30 days of a tour are not eligible for a deposit refund.

## Disclaimer

We take great care in creating fantastic tours for our guests which are custom-made to match their preferences. We will endeavor to follow the itinerary to the greatest possible extent. However, if changes to an itinerary must be made due to weather conditions, guest safety concerns or unexpected delays during a tour, HNT is not responsible if aspects of a tour cannot be achieved. If aspects of a tour are missed or a tour prematurely ends due to HNT reasons, a refund will be provided for any missed aspects or tour dates, not including reservation fees that cannot be refunded from hotels, operators or others.

## What Our Guests are Saying

*“The most enjoyable and relaxing holiday we’ve ever experienced!” - A.W. (Indonesia)*

*“Absolutely brilliant! I would recommend these guys to anyone who wants to see the REAL Hokkaido. I was looked after with the utmost care and every one of my needs were met.” - U.Y. (England)*

*“A One of a kind travel experience.” - L.B.P (Malaysia)*



**Hokkaido Nature Tours**

1-7 5-13 Ishiyama, Minami-ku  
Sapporo, Hokkaido, Japan  
(+81)70-3540-6622